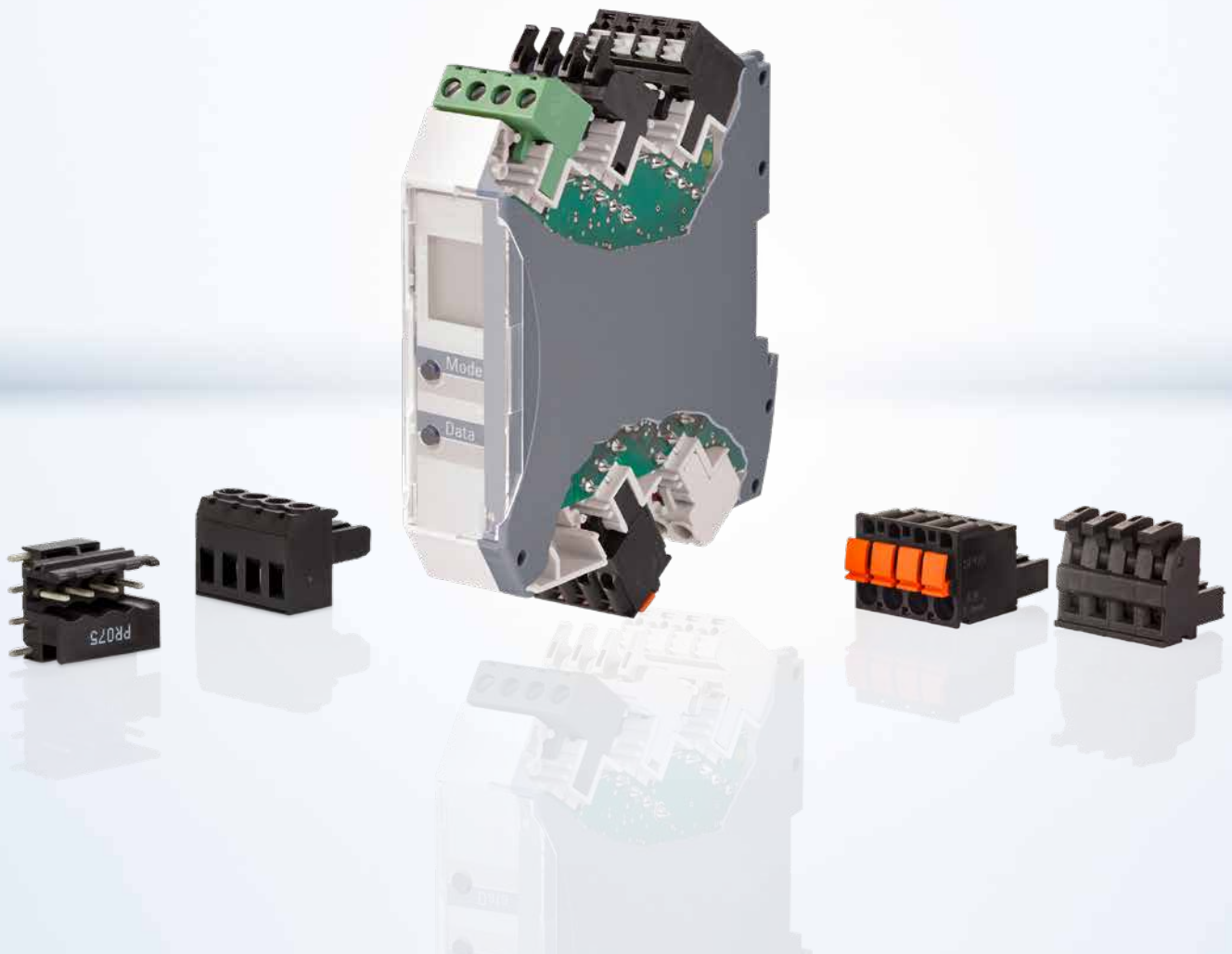


Pluggable Connection Solutions for Rail-Mounted Devices



Applications

There is an increasing individualization of rail-mounted devices on the market due to the product design. METZ CONNECT offers a complete range of connectivity solutions for rail-mounted devices to support this development. This offer covers both the very well proven solutions of the technology for screw type terminal blocks and the constantly growing technology for spring clamp terminal blocks. Connection solutions from METZ CONNECT – for this product range it means: technically safe and reliable pluggable terminal blocks for various connection technologies. Add to this the matching

pin headers which meet growing market requirements, for example, the increasingly widespread reflow capabilities, and which are suitable for the various installation options for circuit boards. The design of rail-mounted devices also plays an important role on the market, and this also affects the connection technology. Here METZ CONNECT offers a variety of color and printing options as well as additional product designs such as finger latches or mounting flanges, as well as customized adaptations of product forms and functions.



RP015xxVBLC

- > screw type terminal block
- > lift system offers connection advantage
- > large connection cross-section



SP045xxVBNC

- > spring clamp terminal block
- > eccentric lever allows operation without tools
- > clamp box open ex-works
- > color option possible for each pole



SP065xxVBPC

- > spring clamp terminal block with push-in technology
- > finger latch allows operation without tools
- > integrated test point



SP995xxVBNC

- > spring clamp terminal block with push-in technology
- > 2 connection options per pole
- > wires can be disconnected easily and individually



RP085xxVBLC

- > screw type terminal block
- > lift system offers connection advantage
- > large connection cross-section

Benefits

- > complete range for different installation requirements
- > a variety of connecting technologies
- > additional product designs (operating options, mounting flanges etc.)
- > solutions for different connection cross-sections
- > color variants at customer request
- > varying number of poles
- > codability
- > customer-specific adaptations possible
- > suitable for cable sheath diameters of 5.5 to 10.5 mm

Optimal connection solutions

METZ CONNECT meets market requirements and offers you an extensive range of connection technology for rail-mounted devices: connection technologies for various circuit board arrays in different housing widths and design shapes. The following gives you an excerpt from our innovative product portfolio.

P/N RP085XXVBLC



- › pluggable screw type terminal block
- › lift system
- › centerline 5.00 mm
- › electrical data 12 A/250 V
- › connection cross-section 0.08–2.5 mm²
- › number of poles 2 to 12
- › codable
- › color options

P/N SP065XXVBNC



- › pluggable spring clamp terminal block
- › push-in technology
- › centerline 5.00 mm
- › electrical data 12 A/250 V
- › connection cross-section 0.08–2.5 mm²
- › number of poles 2 to 24
- › codable
- › color options

P/N SP065XXVBPC



- › pluggable spring clamp terminal block
- › push-in technology
- › finger latch
- › centerline 5.00 mm
- › electrical data 12 A/250 V
- › connection cross-section 0.08–2.5 mm²
- › number of poles 2 to 24
- › codable
- › color options

P/N PR075XXHBEL/ PR075XXHBER



- › pin header for horizontal circuit board
- › centerline 5.00 mm
- › electrical data 12 A/250 V
- › number of poles 2 to 4
- › open ends
- › THR-capable
- › Tape & Reel is possible
- › codable

P/N SP995XXVBNC



- › pluggable spring clamp terminal block
- › push-in technology
- › centerline 5.00 mm
- › 2 connections per pole
- › electrical data 12 A/250 V
- › connection cross-section 0.2–2.5 mm²
- › number of poles 2 to 8
- › codable
- › color options

P/N SP045XXVBNC



- › pluggable spring clamp terminal block
- › eccentric lever
- › centerline 5.00 mm
- › electrical data 10 A/250 V
- › connection cross-section 0.08–1.0 mm²
- › number of poles 2 to 24
- › codable
- › color options

P/N RP015XXVBLC



- › pluggable screw type terminal block
- › lift system
- › centerline 5.00 mm
- › electrical data 13.5 A/320 V
- › connection cross-section 0.08–2.5 mm²
- › number of poles 2 to 24
- › codable
- › color options

P/N PR065XXHBBN



- › pin header
- › centerline 5.00 mm
- › electrical data 13.5 A/320 V
- › number of poles 2 to 12
- › closed ends
- › THR-capable
- › Tape & Reel is possible
- › codable

METZ CONNECT GmbH is a member of the following organizations and associations.



METZ CONNECT GmbH

Im Tal 2
78176 Blumberg
Germany

Phone +49 7702 533-0
Fax +49 7702 533-189

info@metz-connect.com
www.metz-connect.com

METZ CONNECT USA Inc.

200 Tornillo Way
Tinton Falls, NJ 07712
USA

Phone +1-732-389-1300
Fax +1-732-389-9066

METZ CONNECT France SAS

28, Rue Schweighaeuser
67000 Strasbourg
France

Phone +33 3886 170 73
Fax +33 3886 194 73

METZ CONNECT Zhongshan Ltd.

Ping Chang Road
Ping Pu Industrial Park
Sanxiang Town
Zhongshan City, 528463
Guangdong Province
China

Phone +86 760 86365 055
Fax +86 760 86365 050

METZ CONNECT Asia Pacific Ltd.

Suite 1803, 18/F
Chinachem Hollywood Centre,
1 Hollywood Road, Central
Hong Kong

Phone +852 26 027 300
Fax +852 27 257 522

