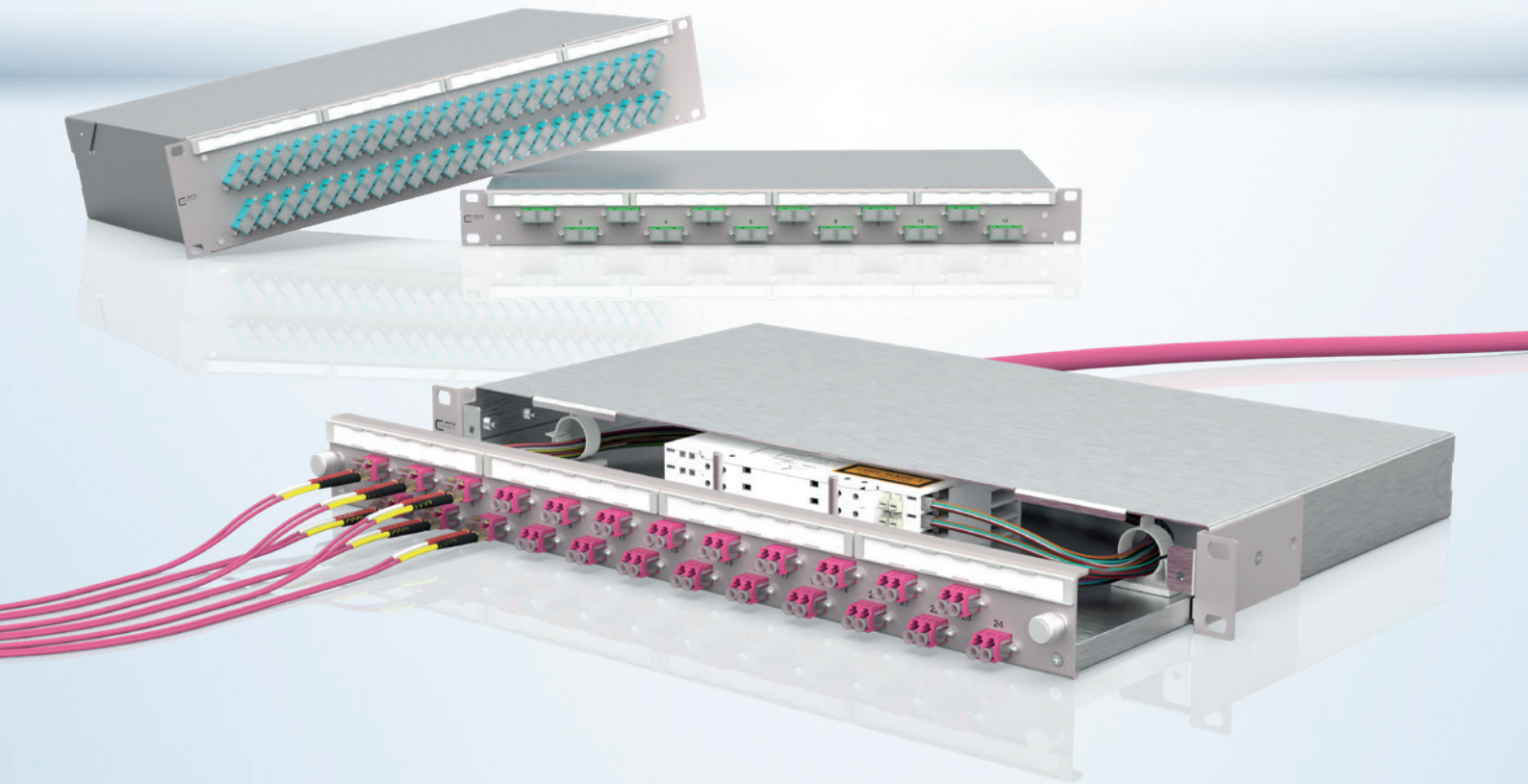


# OpDAT fix<sup>2</sup>/ OpDAT slide<sup>2</sup> – Rethinking standard - the new generation of patch panels



Service-friendly  
design



User-friendly adapter  
arrangement

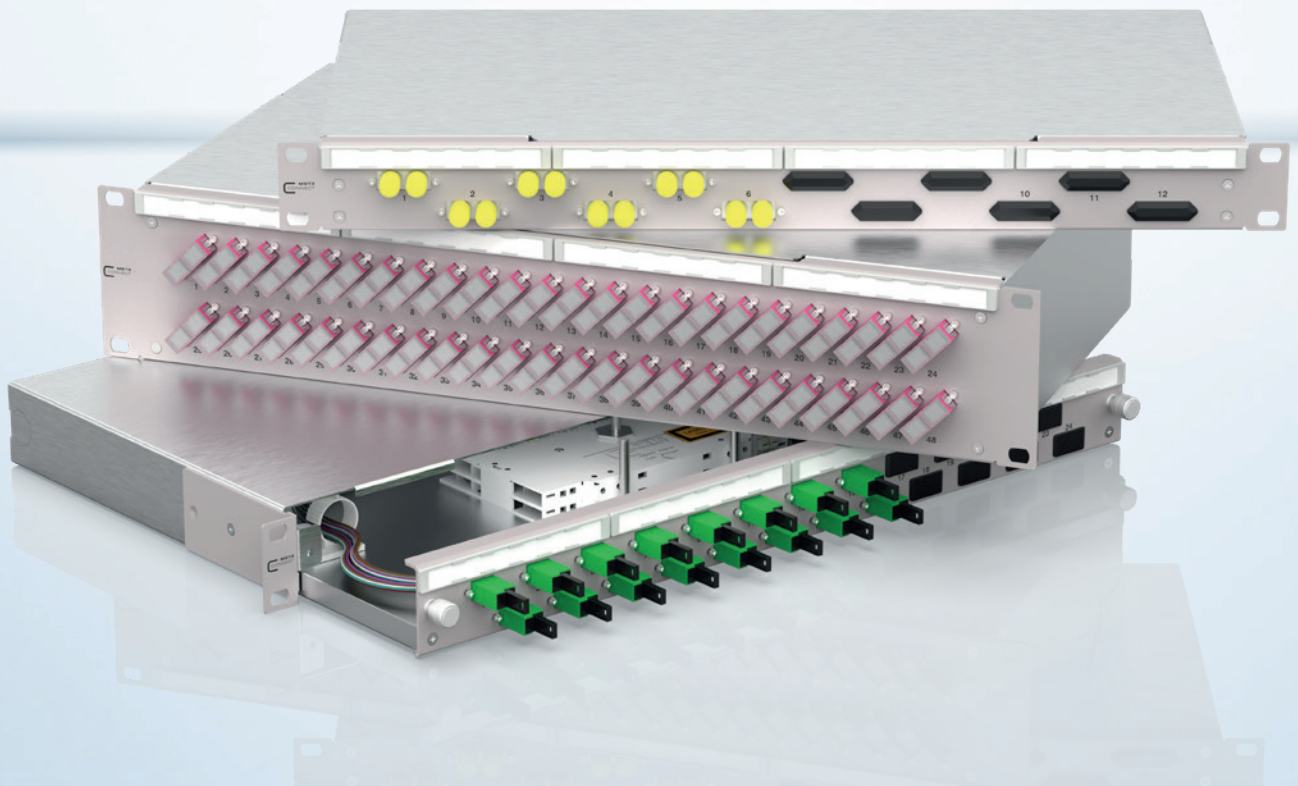


Title  
block



Tool-free  
opening

## Technical information



### Product specification

The new generation of the OpDAT patch panel is available in 2 different designs. The **OpDAT fix<sup>2</sup>** is designed for permanent installation. The patch panel cover can be opened without tools, making quick and easy access possible. The OpDAT fix<sup>2</sup> can be selected as a 1 RU or 2 RU variant.

The **OpDAT slide<sup>2</sup>** has an extending drawer, which can be tilted down when extended, therefore making work inside on the 19 inch box easier. The OpDAT slide<sup>2</sup> 30 mm can be adjusted in depth if required. Thanks to an end stop on the drawer, you can work with both hands on a patch panel without having to fix it in place. Furthermore, the drawer can be removed entirely

by using a simple handle. The innovative quick fastener of the OpDAT slide<sup>2</sup> provides for a quick, steady, and reliable opening and closing of the drawer.

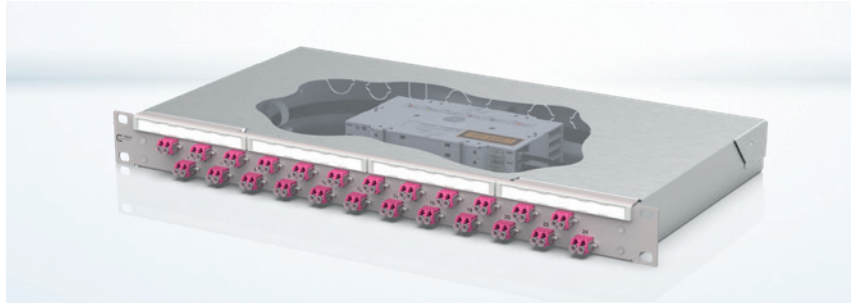
The basic housings of both patch panels are made from galvanized steel and meet the highest demands on quality and production. The patch panels are manufactured in line with IEC 60297-3 and therefore fit in all 19 inch frames. The front plates on the patch panels are powder-coated. There are removable labeling fields for individual marking on each front plate. On the back of the housing there are 6x M20, 2x M25 and two U-cut-outs as versatile cable entry options.

## Variants

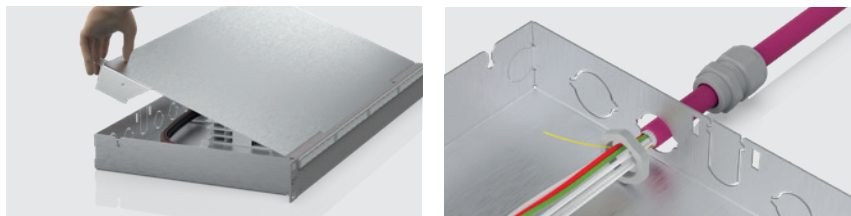
### PRODUCT NAME

### PROPERTIES

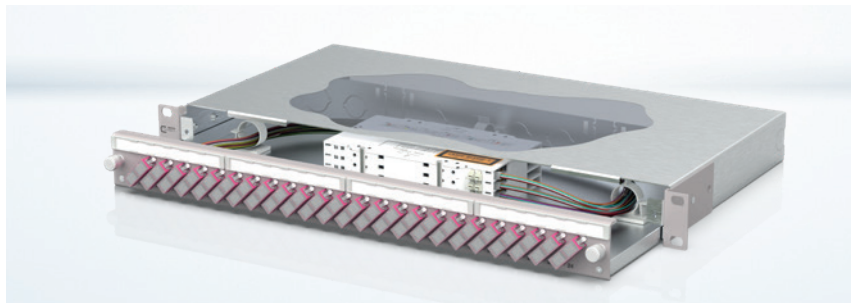
Fix<sup>2</sup>



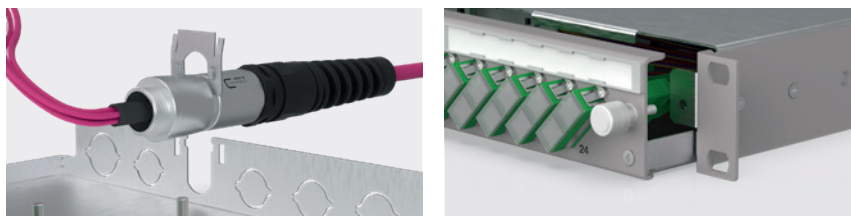
- > Permanent installation
- > Tool-free cover
- > Available as a 1 RU or 2 RU variant



Slide<sup>2</sup>



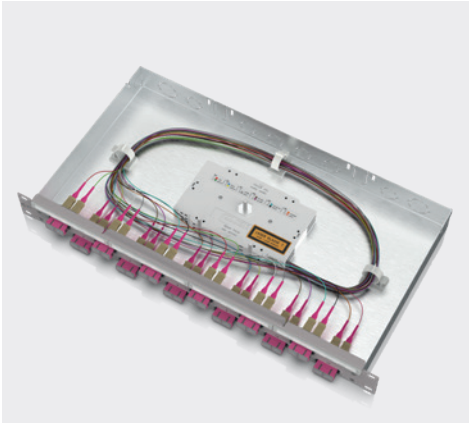
- > Extendable
- > Tilts down
- > Innovative quick fastener
- > Depth adjustable



## Things in common

- > Housing made from steel sheet
- > Front plate powder coated
- > Removable labeling field
- > 6x M20, 2x M25, 2x U-cut-outs
- > According to IEC 60297-3
- > Optional: strain relief for incoming cable

## Equipment variants



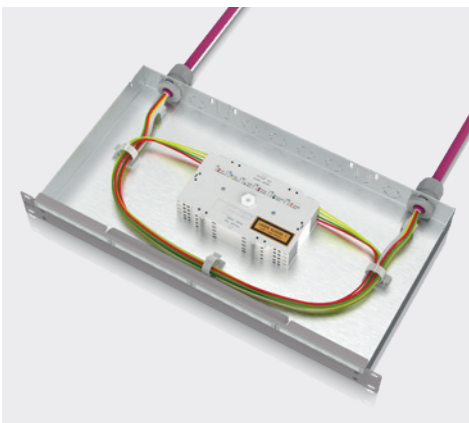
### Splice

Equipped with pigtails and adapters, this variant is prepared for the connection of installation cables. The pigtails are visually checked in line with IEC 61300-3-35 Ed.2 and kept ready to splice in the splice trays. Assignment is in line with the color code of IEC 60304.



### VIK

The “VIK” is the best choice when working with pre-terminated cables. The patch panel is equipped with adapters and the U-cut-outs at the back allow the incoming cables to be installed quickly and without tools.

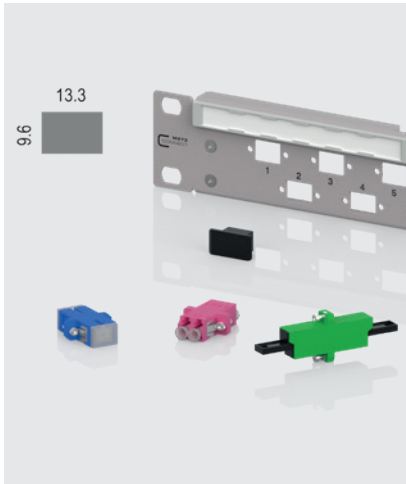


### Connect

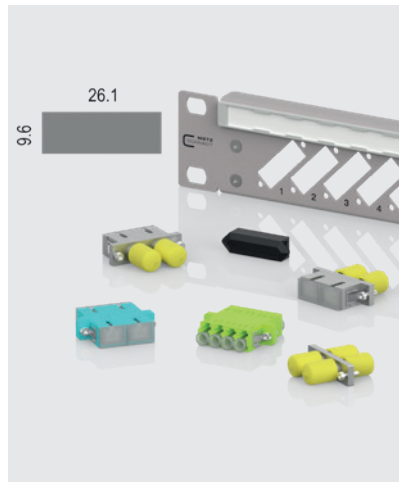
A cable needs to be repaired or guided to a different cabinet? The “Connect” variant is equipped with a closed blind plate and splice trays with splice holders. This means that 2 or more installation cables can be connected in the 19 inch housing.

## Front plates

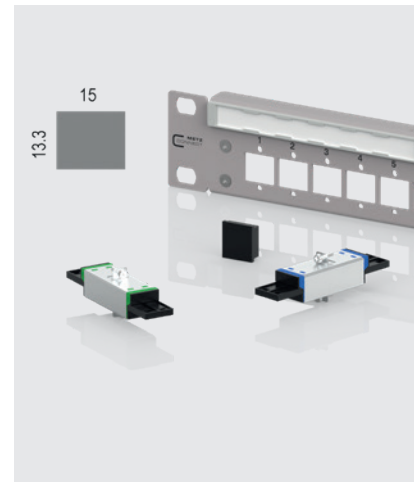
The connector cut-outs on the new front plate are arranged in a user-friendly manner so that each connector can be easily removed or inserted. The front plates can also be ordered with mixed components. The front plates are available for the following adapter cut-outs.



SC-S / LC-D / E2000-S

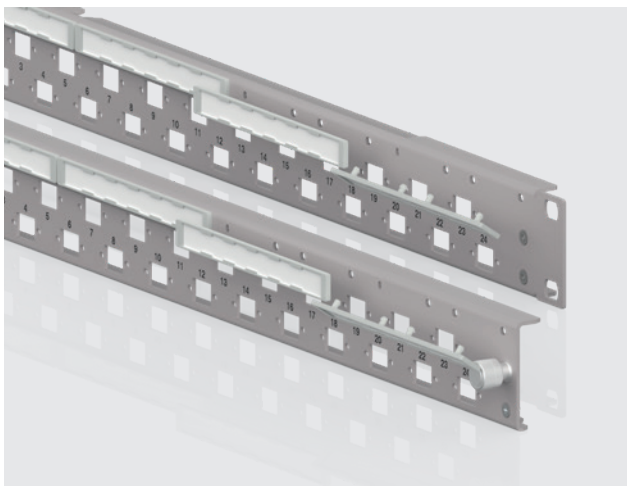


SC-D / LC-Q / ST-D / ST-D/SC-D

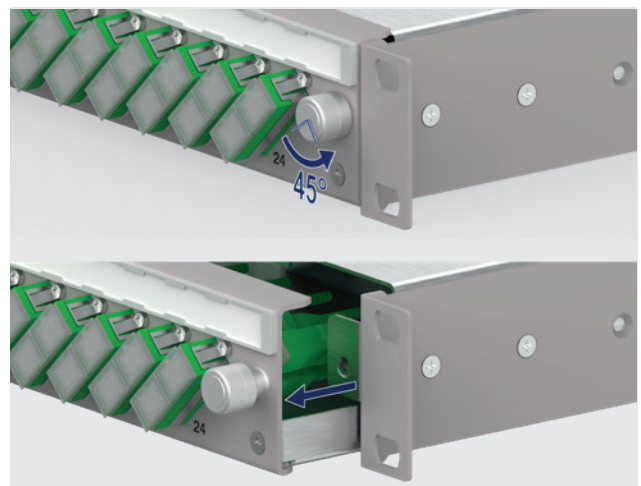


E2000-D

All front plates of the 1 RU version are available with either 12 or 24 adapter breakouts. They feature a removable labeling field and are powder-coated in gray (RAL 7035). There are 48 adapter breakouts available for the fix<sup>2</sup> 2 RU version.



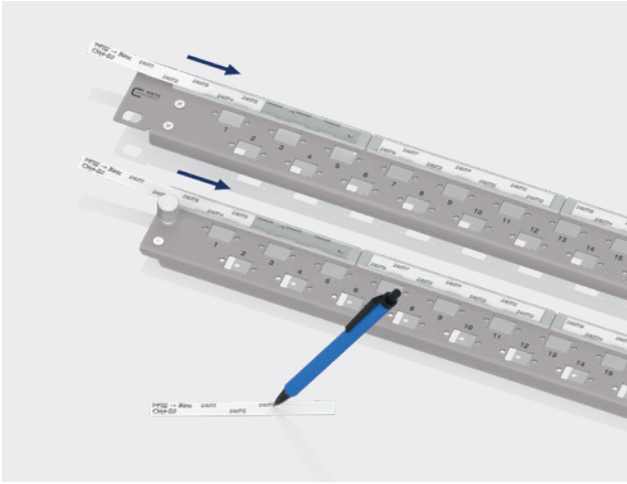
Removable labeling field



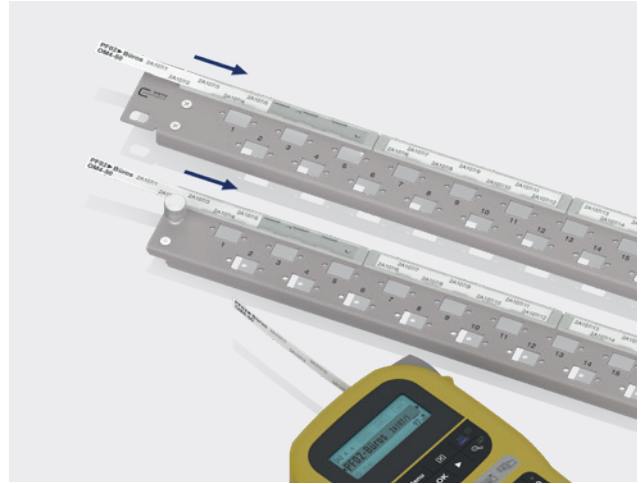
Slide<sup>2</sup> fastener

## Title block

Each front plate is equipped with labeling fields. These can be individually filled out by hand or with a labeling device. The labeling fields can also be removed and the labeling can be glued on.

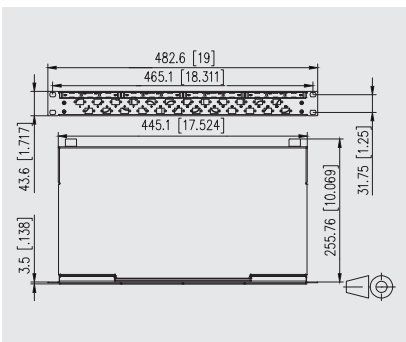


Hand written

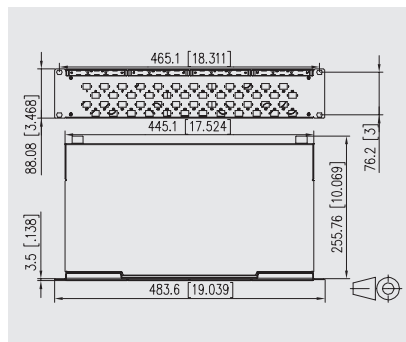


Printed using a label printer

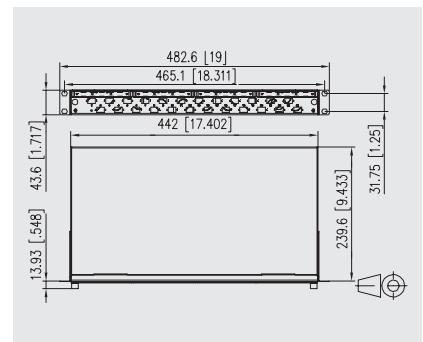
## Dimensional drawing



Fix<sup>2</sup> 1 RU

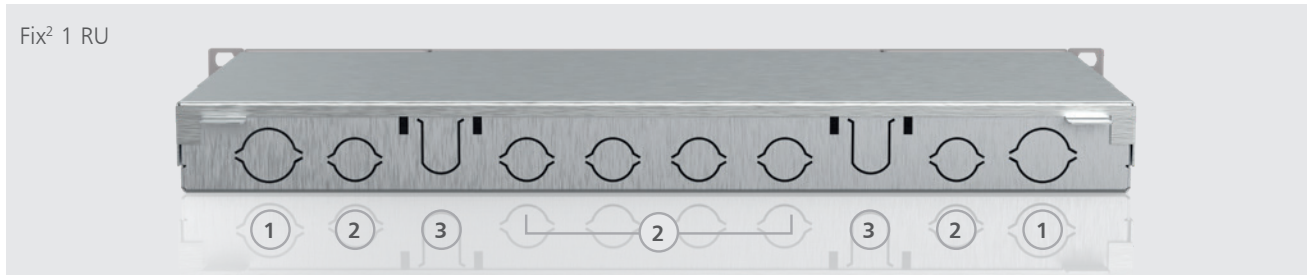


Fix<sup>2</sup> 2 RU

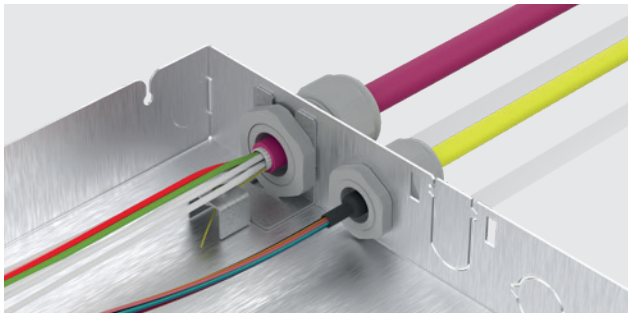


Slide<sup>2</sup> 1 RU

## Cable entries (fix<sup>2</sup> & slide<sup>2</sup> back)



① = M25 / PG16    ② = M20 / PG13.5    ③ = VIK



Connection of installation cables with cable gland and optional strain relief



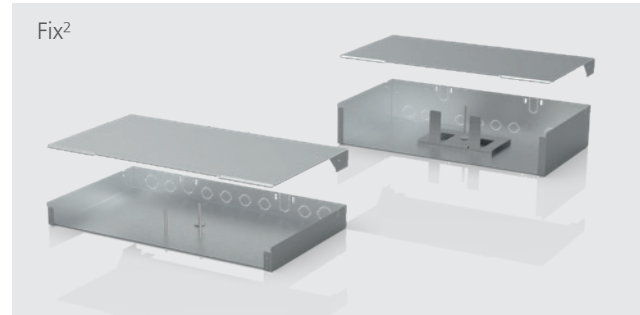
Connection of VIK with mounting plate

## Configuration – a patch panel to suit your needs\*

### 1. Select basic housing



Extendable

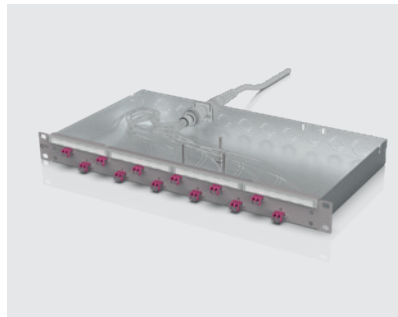


Permanent installation

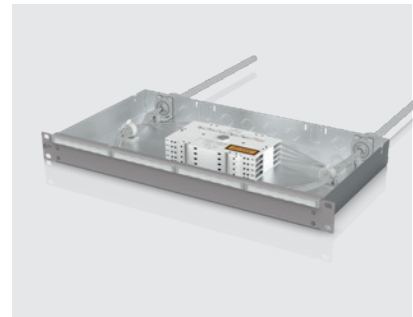
### 2. Select application



Splices

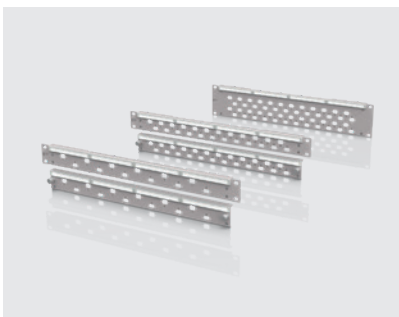


Pre-terminated cables

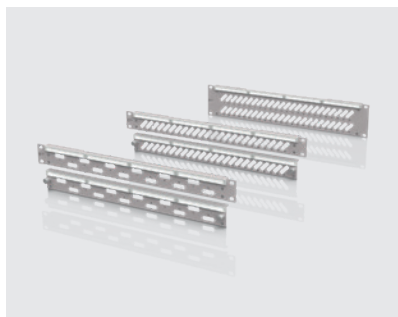


Cable connection

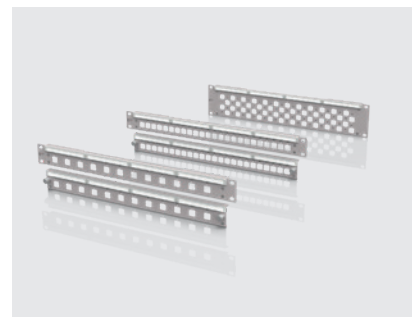
### 3. Select front plate



SC-S / LC-D / E2000-S



SC-D / LC-Q / ST-D



E2000-D

\*Examples – further configuration options can be selected



#### 4. Select adapter type / fiber type



SC-S / LC-D / E2000-S

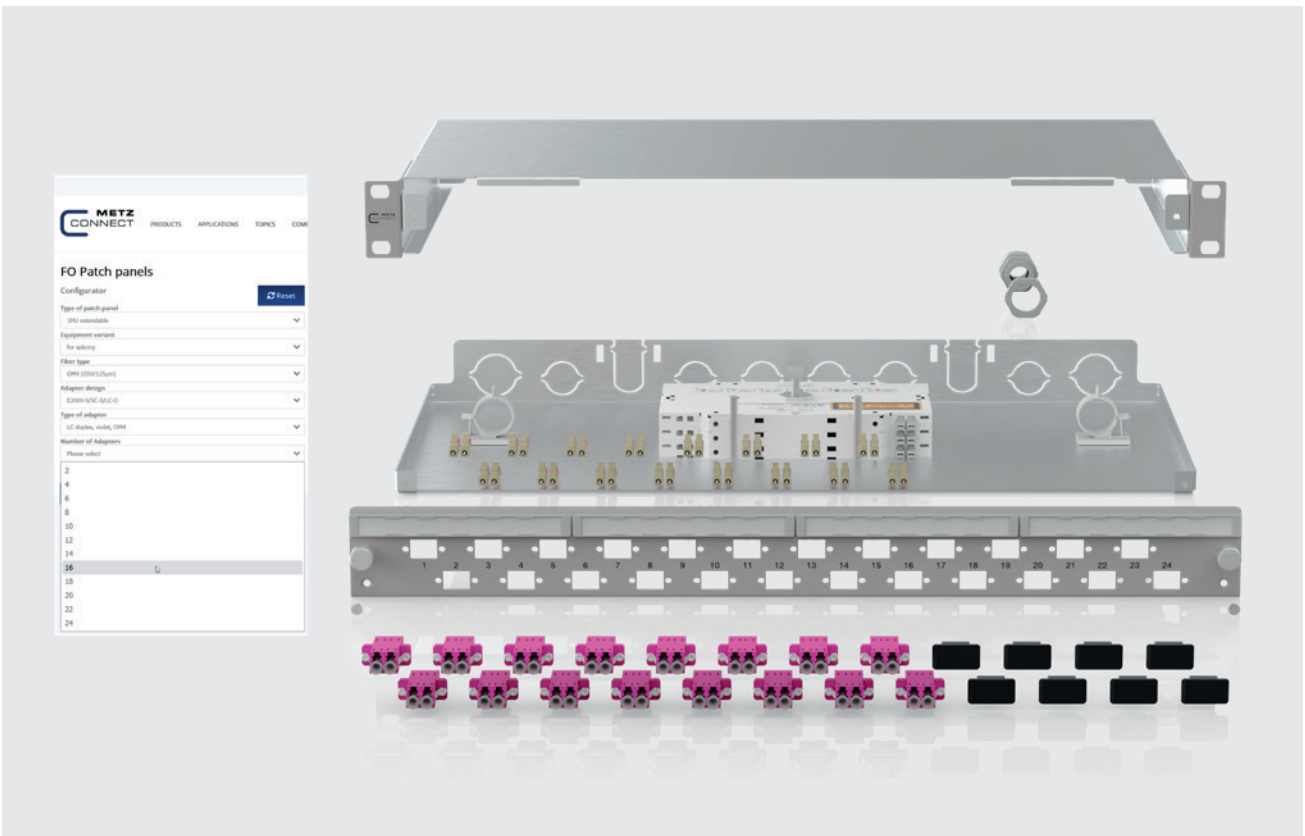


SC-D / LC-Q / ST-D and SC-D/ST-D



E2000-D

#### 5. Select the number of adapters



## Accessories

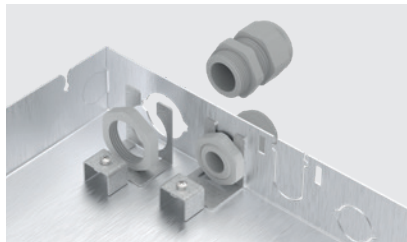
### Strain relief

A M20 or M25 strain relief can be optionally attached. This is mounted on the cable gland and the incoming cable is fixed with strain relief elements.

SIZE	P/N
M20	150240M20Z-E
M25	150240M25Z-E



Product image



Mounting



Mounting

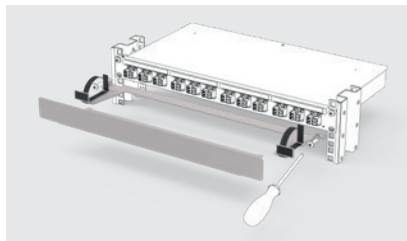
### Patch cord tray

Clean and organized cabling is part of every installer's job and allows for quick and effective troubleshooting in the event of patching or damage. The METZ CONNECT patch cord tray can be mounted to any OpDAT fix<sup>2</sup> and neatly leads all plugged patch cords outside. The mounted panel can be quickly removed to gain good access to the cables. This also provides for a neat appearance and protects against possible damage.

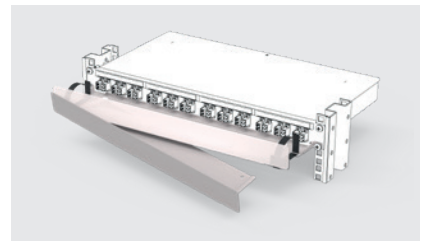
SIZE	P/N
Gray (RAL 7035)	1502500000-E
Black (RAL 9005)	1502500000-B



Product image

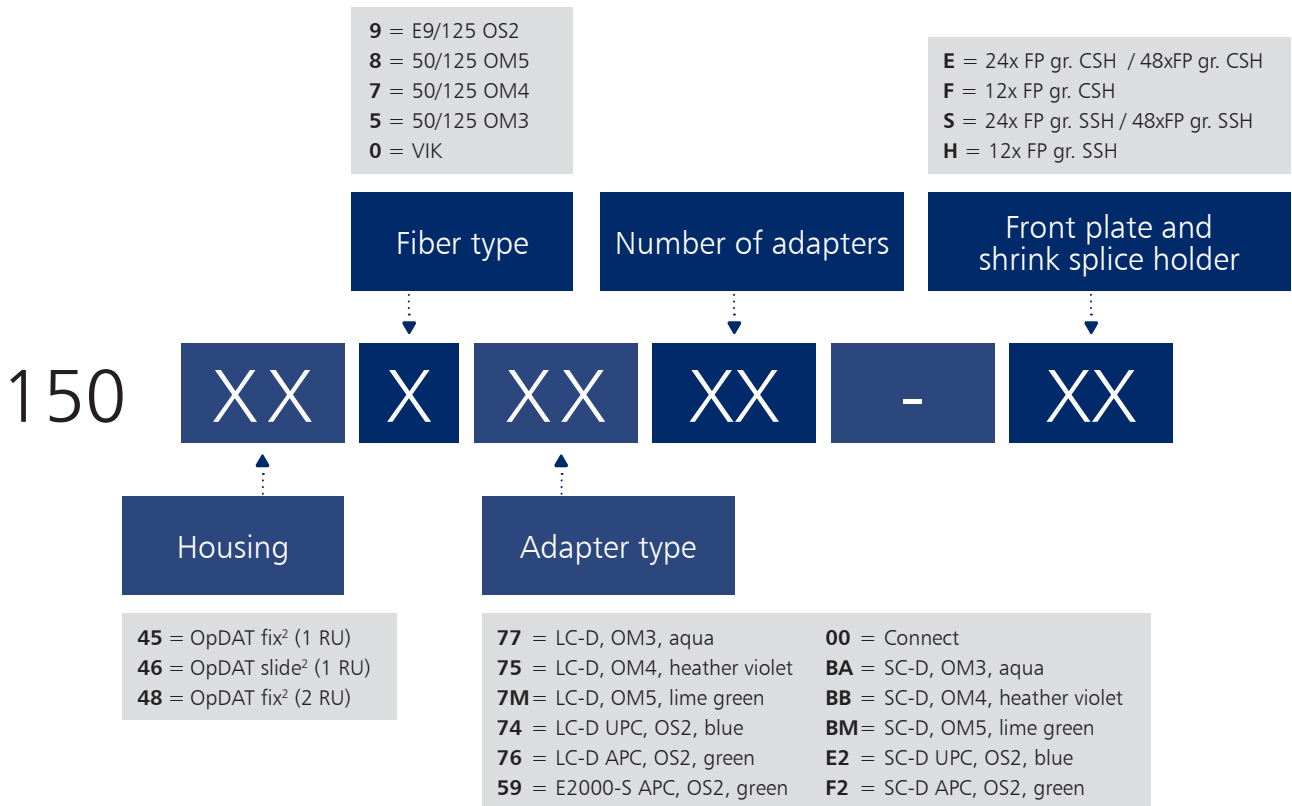


Mounting



Mounting

## Order information



Please note!

You can put together all available combination options with the help of our patch panel configurator:  
[www.metz-connect.com/configurator](http://www.metz-connect.com/configurator)





We realize ideas

**METZ CONNECT GmbH**

Im Tal 2  
78176 Blumberg  
Germany

Phone +49 7702 533-0  
Fax +49 7702 533-189

info@metz-connect.com  
www.metz-connect.com

**METZ CONNECT USA Inc.**

200 Tornillo Way  
Tinton Falls, NJ 07712  
USA

Phone +1 732 389 1300  
Fax +1 732 389 9066

**METZ CONNECT France SAS**

28, Rue Schweighaeuser  
67000 Strasbourg  
France

Phone +33 3886 17073  
Fax +33 3886 19473

**METZ CONNECT AUSTRIA GmbH**  
c/o German chamber of commerce  
in Austria

Schwarzenbergplatz 5, Top 3/1  
1030 Vienna  
Austria

Phone +43 1 227 12 64  
Fax +43 1 227 12 66

**METZ CONNECT Zhongshan Ltd.**

Ping Chang Road  
Ping Pu Industrial Park  
Sanxiang Town  
Zhongshan City, 528463  
Guangdong Province  
China

Phone +86 760 86365 055  
Fax +86 760 86365 050

**METZ CONNECT Asia Pacific Ltd.**

Suite 1803, 18/F  
Chinachem Hollywood Centre,  
1 Hollywood Road, Central  
Hong Kong

Phone +852 26 027 300  
Fax +852 27 257 522

